




*A tradition of*  *trust*



Basera infracity brings  
BASERA-AZIM COMPLEX

Our mission is to care the need of people, who are associated with us & trust on us. We are fully committed to provide the offerdable Commercial Space & Flats.



Come see what makes us **exceptional.**

## Our Projects in Gorakhpur



### SRI KUNJ

Affordable Residential & Commercial spaces with wide open roads at medical road, Basaratpur.



### SWASTIK TOWER

Residential & Commercial spaces with wide open roads at Sahabganj near Mirzapur chowk.



### AAMANTRAN

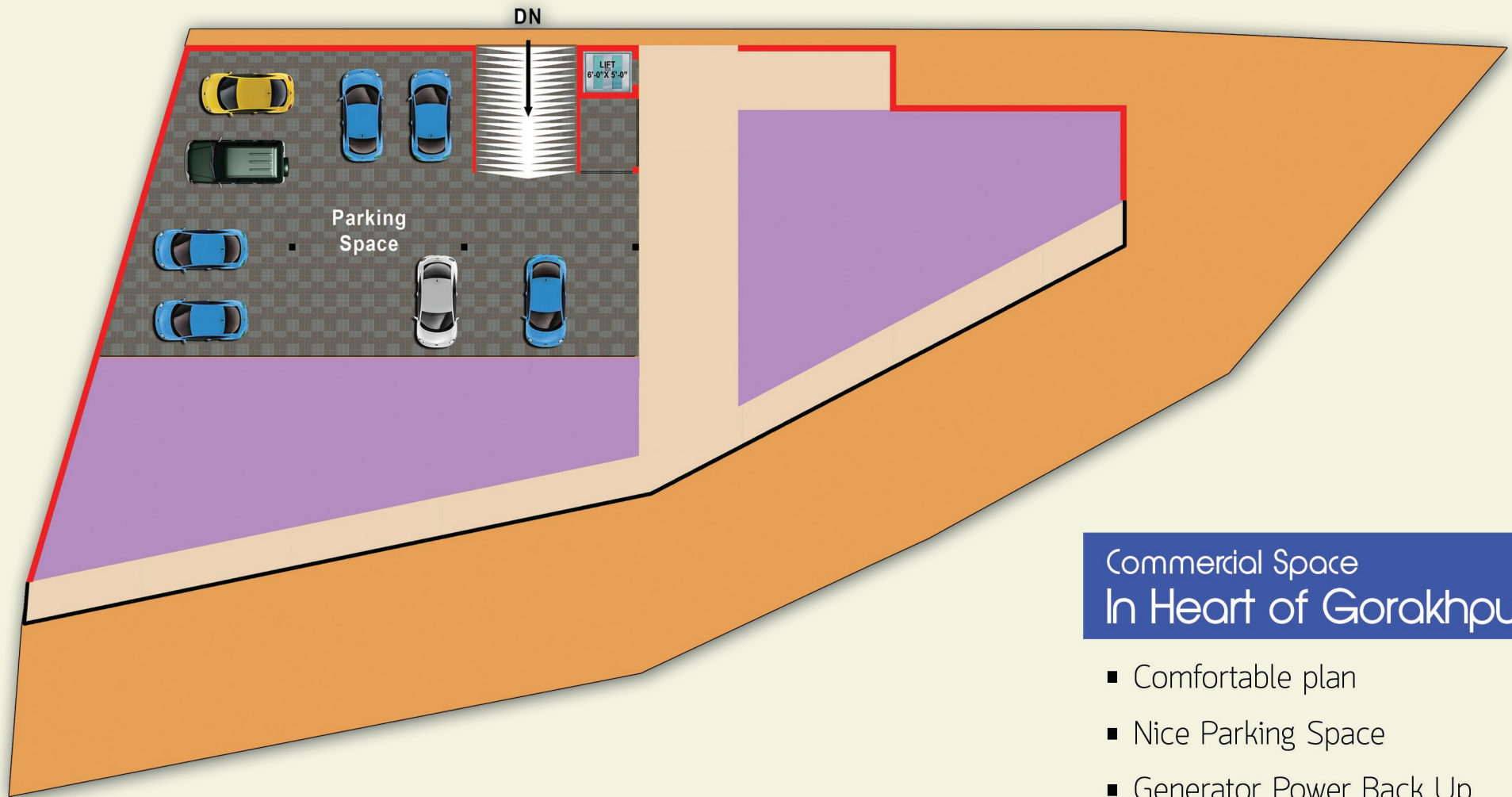
**BASERA INFRACITY** brings a luxurious multi stored Group Housing in Basharatpur, Gorakhpur.



### PANCHWATI

**We** brings another luxurious multi stored Group Housing in Cantt. Road, Betiahata, Gorakhpur.

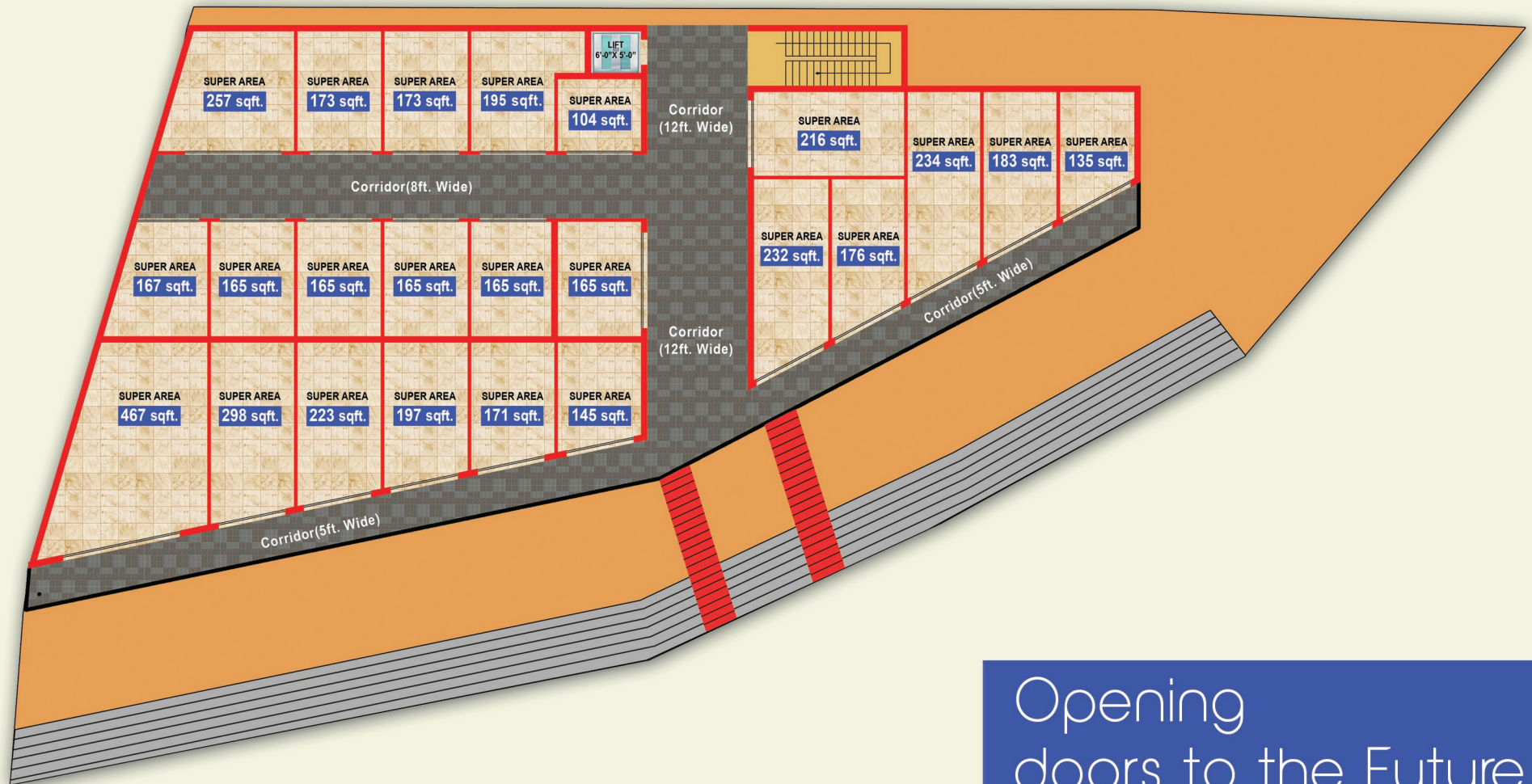
## Basement floor for Parking



## Commercial Space In Heart of Gorakhpur

- Comfortable plan
- Nice Parking Space
- Generator Power Back Up
- CC Tv Security system

# Lower Ground, Upper Ground & First Floor of the Complex



Opening  
doors to the Future..

# Second & Third Floor Plan

Super Area 770 Sq.ft.	
Bed Room	2
Drawing/Dinning	1
Kitchen	1
Toilet	2

[2]

Super Area 855 Sq.ft.	
Bed Room	2
Drawing/Dinning	1
Kitchen	1
Toilet	2

[1]



[3]

Super Area 1366 Sq.ft.	
Bed Room	3
Drawing/Dinning	1
Kitchen	1
Toilet	2
Balcony	1

Super Area 945 Sq.ft.	
Bed Room	3
Drawing/Dinning	1
Kitchen	1
Toilet	2
Balcony	1

[4]

Super Area 1915 Sq.ft.	
Bed Room	3
Drawing	1
Lounge/Dinning	1
Kitchen	1
Toilet	3
Balcony	3
Servant Room	1
Pooja	1

[5]

Luxurious Space for  
**2Bhk & 3Bhk Flats**

# Standard Specifications



## STRUCTURE

Earthquake resistant structure.



## FLOORING

Vitrified tiles flooring in Drawing/Dinning,Bedrooms,sitting area.  
Non-skid tiles in Bathrooms.Marble flooring in kitchen & other's.



## DOORS & WINDOWS

Hardwood door & frame duly painted or equivalent.Wooden windows.



## BATHROOMS

Provision of hot & cold water pipes,sanitary/chinware of branded make such as Hindustan/perry/cera & others.Mirror of appropriate size in all bathroms.Glazed tiles up to 7ft with towel rail,etc.



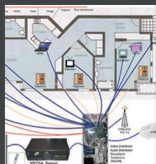
## HARDWARE

Shutter hinges in brass/steel.All other hardware in brass/steel.All doors expect those in bathrooms and kitchen to be provided with a mortise lock.



## Wall FINISH

Internal wall finish would be wall putty & primer. External wall finish would be waterproof paint.



## EXTERNAL WORK

Electrical work with copper wires in concealed PVC conduits.Provision shall be made for sufficient lighting & power points,switches,sockets, telephone and TV points in each bedroom & Drawing / Dining room fans & decorative light fitting in all rooms geysers in all bathroom.

# Salient Features

- › Proper light and ventilation in all rooms.
- › Plan dully approved by GDA.
- › Posh And peaceful area.
- › Wide open spaces all around.
- › Security in campus by CC Tv camera's.
- › Covered parking
- › Eco friendly and vastu adhering layout of indiviual flats.
- › 24 hours power back up.



## Loan Facility Available





## Basera Infracity Private Limited

H.O. : CP-3/6, Vikrant Khand, Gomtinagar, Lucknow-226010 (U.P.)

B.O. : MIG-102 Siddarth Enclave, Taramandal, Gorakhpur



**7524920751, 7524920754**

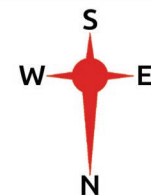


[baserainfracitypvt.ltd@gmail.com](mailto:baserainfracitypvt.ltd@gmail.com)



[baserainfracity.com](http://baserainfracity.com)

### Key Plan



▲ To Fatima Hospital

◀ To Asuran Chowk

▶ To Padari Bazar

Sacret Heart  
Academy

**Site**